

What you need to know...

A locate request is considered valid when the dig location, detailed description and map selection (used to generate notification) convey the same area.

There are three drawing tool options made available when you click on the Tools menu;

- Area drawing creates shapes and shades in the area.
- Line drawing creates line(s) and let's you change the width from 3Ft (default) to 10 M.
- Additional drawing options create 10 M radius circles for trees, boreholes, poles, and other types.

The Measuring tool can be used to help identify a precise work area and the Annotation tool is useful for adding additional notes to the map.


You can draw multiple dig area's on one image creating a detailed map; or when working on a larger project, you can re-load the map and attach multiple images, using the previous drawing overlay, to ensure a continuous map selection drawing.

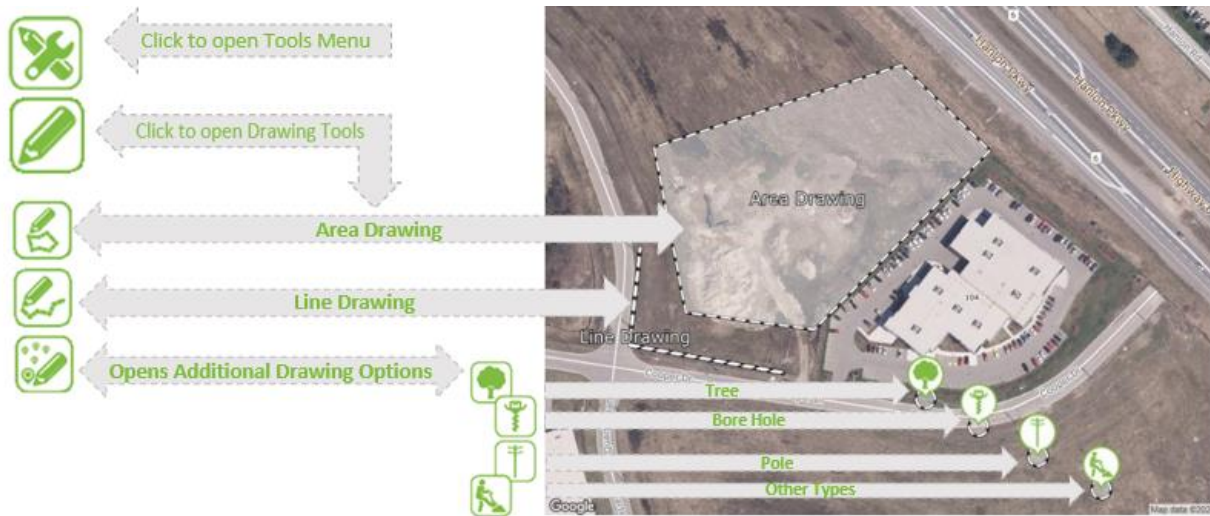
Why you want to do this...

Notification to the Members is based on the drawing(s) an excavator creates on the aerial image. Drawings created by excavators are expected to accurately represent the proposed dig area.

Where can you find assistance?

Contact Ontario One Call Client Services for web portal support by email: Solutions@OntarioOneCall.ca

Click  on the aerial map to start the mapping Tutorial.



Our recommended Best Practice for drawing an Accurate Map Selection:

- ✓ Select a draw tool that represents your dig area.
- ✓ Draw where you are digging!
- ✓ Ensure the area where you propose to dig is highlighted on the map.